



# CAPITAL CAMPAIGN

— PHASE 2 —



*“Now finish the work, so that your eager willingness to do it may be matched by your completion of it, according to your means.”*

**2 CORINTHIANS 8:11**

## PROJECT COSTS AT A GLANCE

1	Building Completion/Debt Reduction	\$10,500,000
2	Sanctuary Upgrades Organ \$100,000 Sound System \$750,000 Lighting \$500,000 Chancel \$350,000	\$1,700,000
3	Tithe to Missions	\$1,500,000
4	Maintenance Endowment	\$1,300,000
	<b>Total</b>	<b>\$15,000,000</b>

**For the last 175 years, First Presbyterian Church has sought to serve Greenville’s growing and dynamic community and beyond..**

Our busy and flourishing congregation has recently completed phase one of our Capital Campaign. In opening our new state-of-the-art facilities, we can continue providing a secure spiritual home for all age groups while maintaining ministry priorities that are life-giving and life-affirming.

Developing these ministries further will provide for intergenerational engagement as we intentionally equip each other to live out our faith in Christ amidst the demands and distractions of daily life.

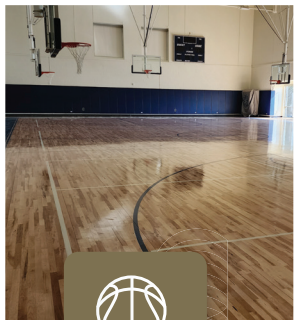
Looking to the future, launching phase two of our Capital Campaign will enable us to continue focusing on transforming the spiritual heart of the city. We thank God for His remarkable faithfulness and your sacrificial commitment over the last few years, as together, we anticipate completing the work He has called us to.

Please prayerfully consider how you can faithfully and financially participate in continuing to serve this generation and beyond.

*Richard Gibbons*



# PHASE 1: MASTER PLAN PRIORITIES AND GOALS



## THE NEED:

A new gym to host activities and events. Our previous gym had become effectively unusable due to roof leaks and poor HVAC and electrical systems. These same problems created issues for our school that shared the building.

## THE SOLUTION:

The new gym is available for our basketball teams, pickleball games, summer camps, and other related activities. It is named for our longtime Activities Minister Lindsay Graham.



## THE NEED:

To increase seating for the Ignite worship service and engagement as an arts center that serves as a blessing to our city for worship services, dramas, musical presentations, and other events. Our modern worship service had outgrown its space in Fellowship Hall.

## THE SOLUTION:

The new Worship & Arts Center seats just over 1,000 and allows for growth of the Ignite service and availability for various performances by members of our congregation, our community, and national and international artists and groups.

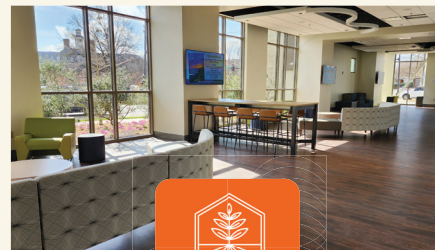


## THE NEED:

To protect the children in our care and to assure parents of the security of their children on our campus. Children's Ministry classes were spread throughout our facilities, with poor security and no central drop-off point for parents.

## THE SOLUTION:

We have renovated and built new children's classrooms for use by both the Children's Ministry and First Presbyterian Academy that are consolidated in one secure area.



## THE NEED:

To nurture and prepare the next generation with state-of-the-art facilities in the heart of the church. The Student Ministry had been in its current space, which was functional but far from ideal, with low ceilings and basic classroom setup, for the past 24 years.

## THE SOLUTION:

The Student Ministry now has a new space that allows for growth as well as varied programming throughout the week. This space can also be used for small performances, workshops, and gatherings that further our call to Transform the Heart of the City and particularly the arts community.

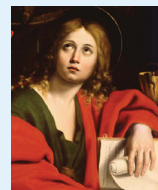


## THE NEED:

To connect the two worship spaces of the church on the same level and foster fellowship. The church has never had a good central gathering space where the congregation could interact between services, regardless of which service they attended.

## THE SOLUTION:

We created two gathering areas. The Sturgis Gathering Space between the Sanctuary and the Worship & Arts Center is named in memory of longtime member Martha Beth Sturgis. A smaller gathering space replaces the former Parlor, and offers a more intimate area to gather. It is named the Abbott Gathering Space in memory of longtime members Forrest and Maryann Abbott.



**A SPECIAL ADDITION:** Thanks to the generosity of Jerry and Alice Lenz, we were able to include a museum-compliant art gallery. The Lenz Gallery, on the third floor of our new building, will allow us to exhibit both classical art, such as the Museum & Gallery's Baroque Masterworks, and some of today's contemporary fine art.

## PHASE 2: PROJECT COSTS

The budget for the project was \$33 million. Our original projections showed the church potentially incurring up to \$19 million in debt on our construction loan during the process of building the project. Again, thanks to the generosity of our congregation and God's providence, we are only projecting a total debt, before this second phase of the campaign, of about \$10.5 million.

### BUILDING COMPLETION AND DEBT RETIREMENT: \$10.5 MILLION

When we presented the plan and the financing options to the congregation before the beginning of the capital campaign, we also stated that we would like to do some work in the Sanctuary if the budget allowed and money was available. As we stand now, this is a possibility.

The cost of the building, financing, etc., is coming in at approximately \$31.5 million, leaving \$1.5 million in the budget for upgrades in the Sanctuary.

### SANCTUARY UPGRADES: \$1.7 MILLION

- The organ, which is 38 years old, needs some updates to the controls and work on the pipes so that we can continue to use this beautiful instrument for many years in the future. (\$100,000)
- The sound system needs a complete overhaul. This system is also 38 years old and no longer adequate for our worship services. We need a system that makes it easier to understand the spoken word, as well as clearly hear the beautiful music of the choir and orchestra. (\$750,000)
- The lighting in the Sanctuary needs to be upgraded to allow better lighting of the entire chancel area and conversion of the architectural lighting to a more efficient LED system. (\$500,000)
- Finally, if possible, the chancel area needs to be modified to allow a larger choir and orchestra, with better functionality during worship. (\$350,000)

*These upgrades are expected to cost approximately \$1.7 million in total, which would put our total construction budget for both the new building and the Sanctuary upgrades at \$33.2 million.*

### TITHE TO MISSIONS: \$1.5 MILLION

As part of this second phase, we also want to make a tithe to missions in the amount of \$1.5 million. This money will be used by the Missions Committee for capital projects needed by our missions partners.

### MAINTENANCE ENDOWMENT: \$1.3 MILLION

Finally, as a stretch goal, we want to create a Maintenance Endowment in the amount of \$1.3 million. This money will be put in an endowment fund to grow until such time as major repairs are needed to the facility.

*The tithe and the endowment are both above the original estimated costs, but because of the generosity of the congregation in the first phase of the campaign, we are now able to realize some of the dreams that we put off originally due to concerns about costs and the economy at the time we started.*

**TOTAL GOAL FOR PHASE 2: \$15 MILLION**

## WAYS TO GIVE

**Make a Commitment or Give Online at  
[FirstPresGreenville.org/give/buildingcampaign](https://FirstPresGreenville.org/give/buildingcampaign)**

Gifts of Cash

Gifts of Appreciated Assets

Direct Charitable Contribution from your IRA

Leaving a Legacy

**Questions?**

Contact Mike Templeton, Executive Director, at  
864.565.0948 or [mtempleton@firstpresgreenville.org](mailto:mtempleton@firstpresgreenville.org).





**FIRST  
PRESBYTERIAN  
CHURCH**

*Transforming the  
Heart of the City*

200 West Washington Street  
Greenville, SC 29601